

---

# Forschungsdaten erfolgreich managen – in Deutschland, Europa und der Welt

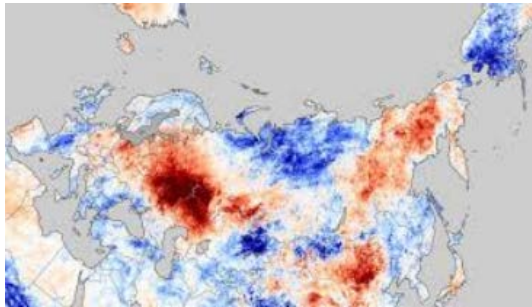


*Klaus Tochtermann  
ZBW Kiel/Hamburg*

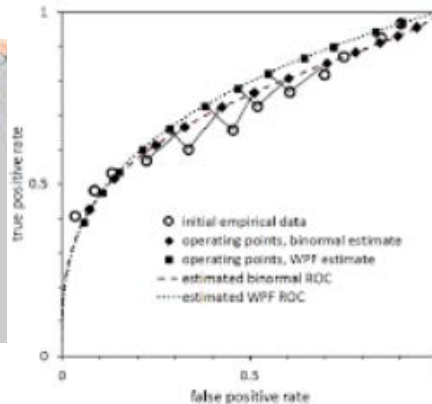
# Forschungsdaten

Forschungsdaten sind Daten, die im Zuge wissenschaftlicher Vorhaben entstehen, z. B.

**Beobachtungen**



**Befragungen**



**Quellen-  
forschungen**



**Digitalisierung**



# Forschungsdaten liegen in Silos



# Forschung wird disziplinenübergreifend

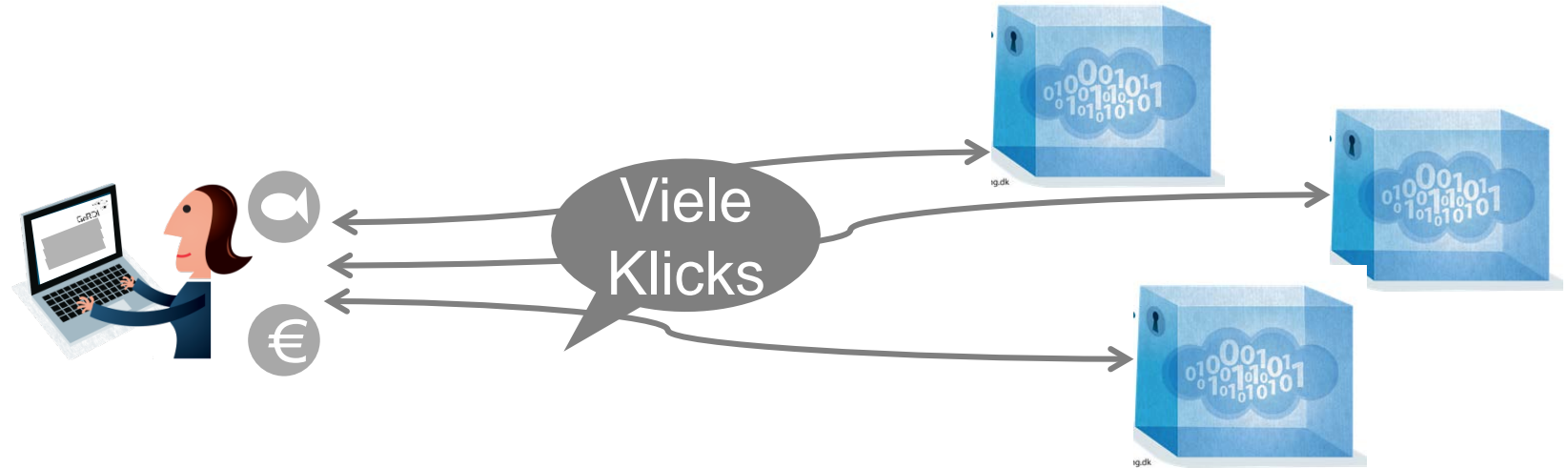
---

In welchem Zusammenhang stehen die Regulierung von Fischfang und die Fischpreisentwicklung?



# Auffinden von Forschungsdaten

---



# Ein Zugangspunkt zu Forschungsdaten

In welchem Zusammenhang stehen Regulierung von Fischfang Und die Fischpreisentwicklung?



GeRDI

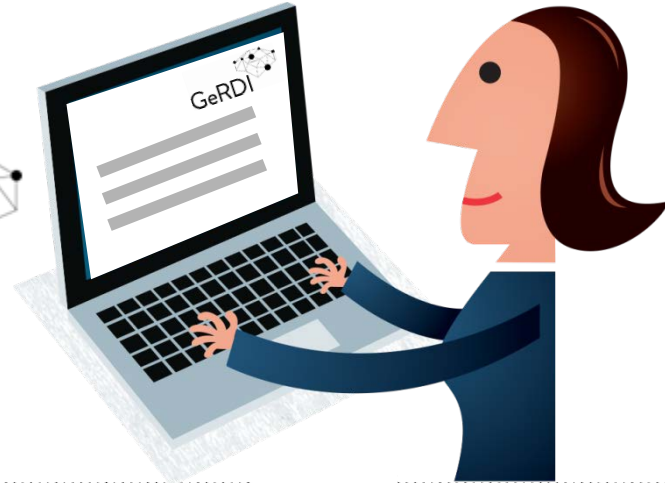
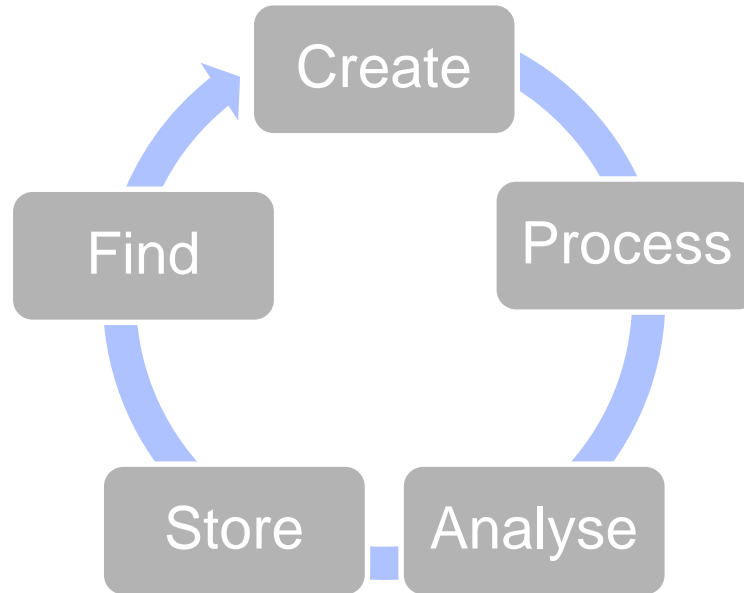


Image: [www.digitalbevaring.dk](http://www.digitalbevaring.dk)

# Unterstützung des Datenlebenszyklus

---



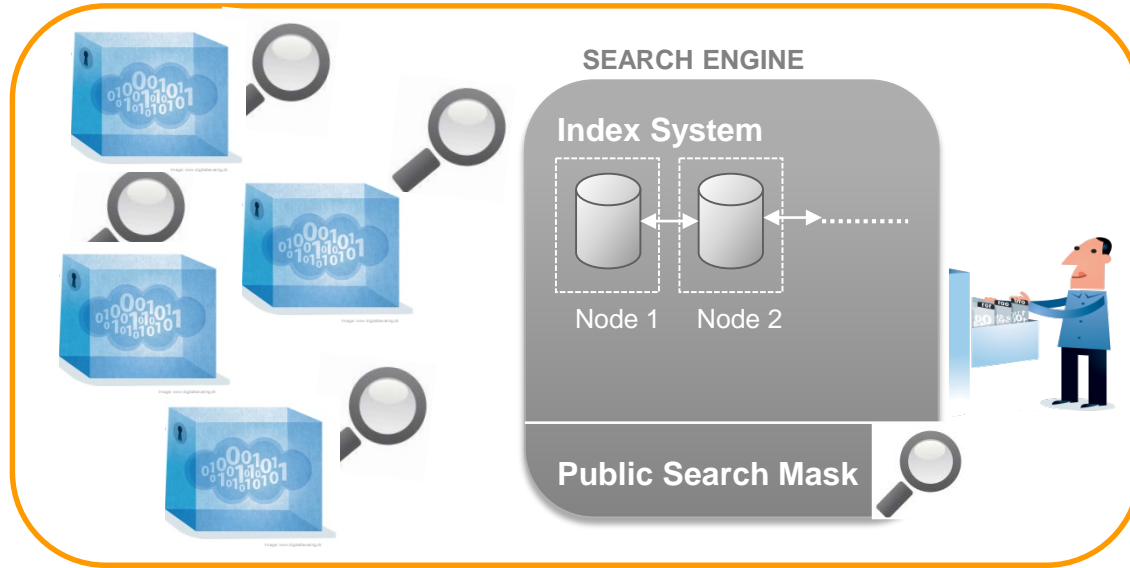
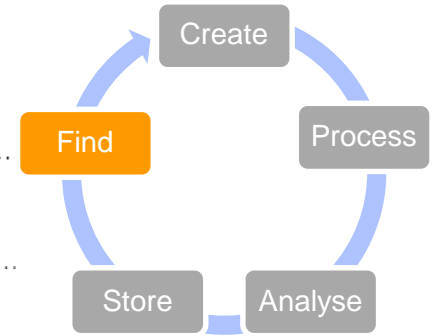


Image: www.digitalbevaring.dk



# GeRDI Process

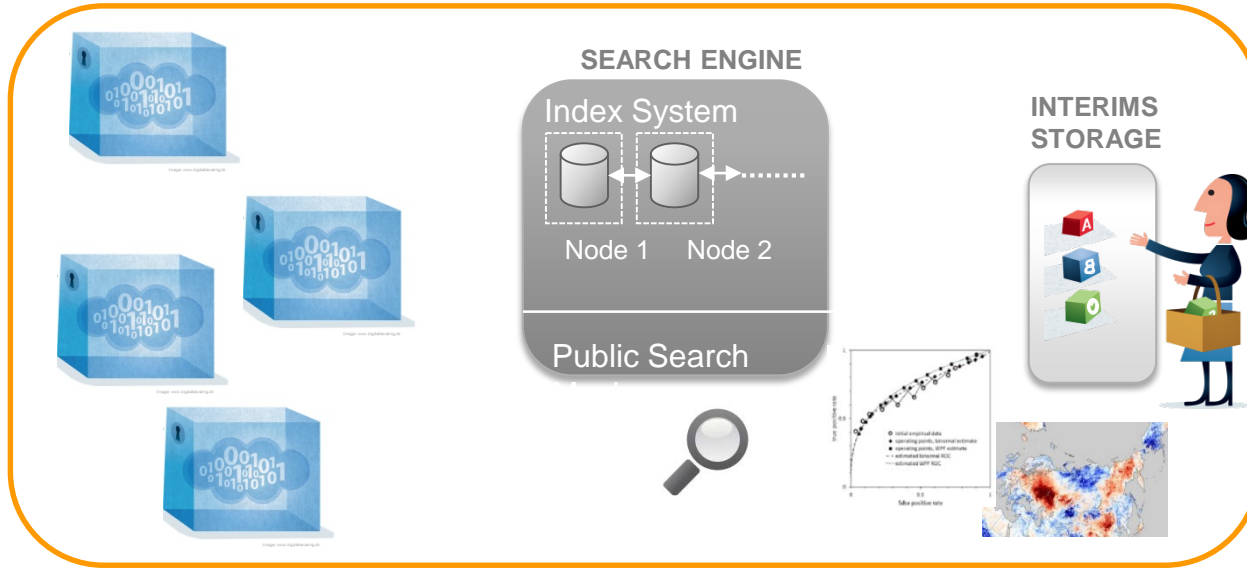
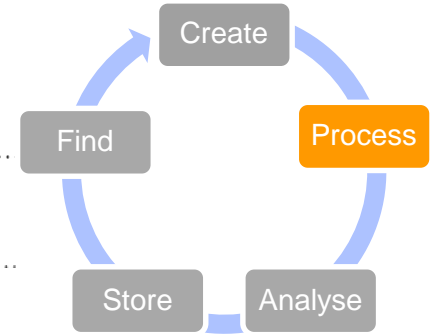
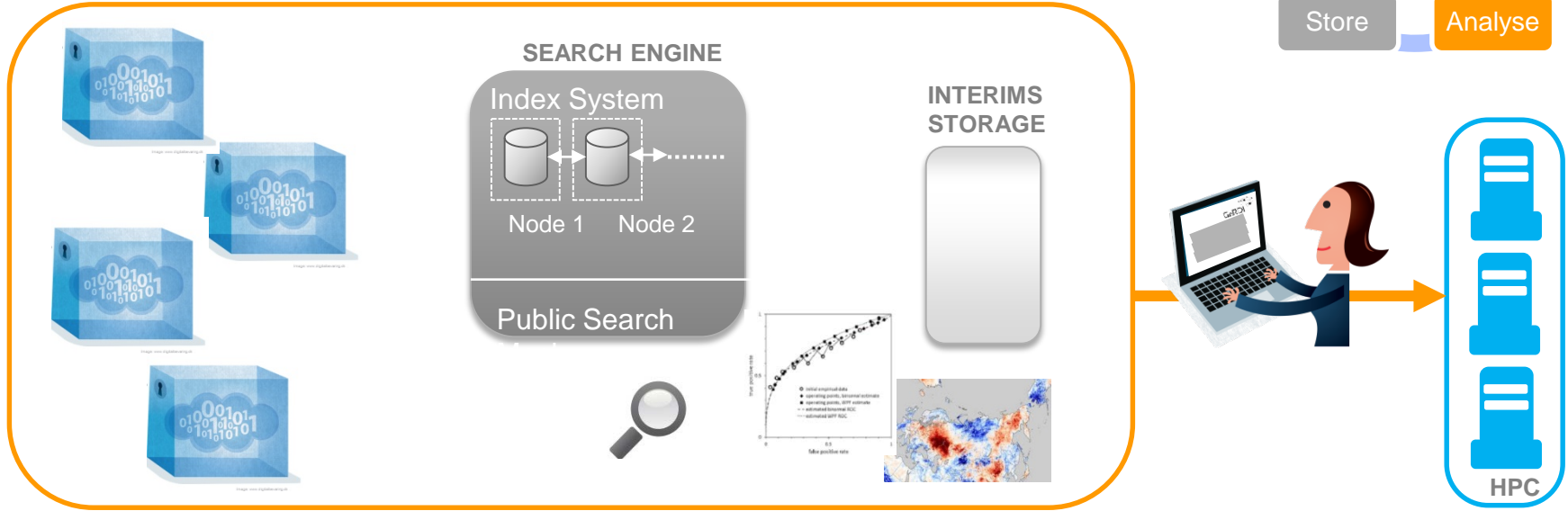
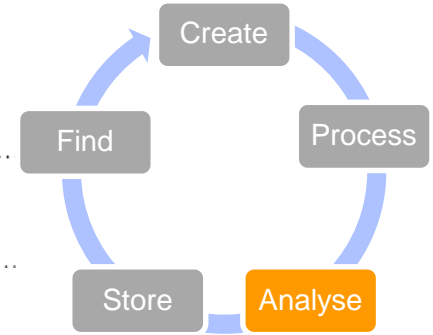


Image: [www.digitalbevaring.dk](http://www.digitalbevaring.dk)

Generic Research Data Infrastructure - [www.gerdi-project.eu](http://www.gerdi-project.eu)



# Store / Create

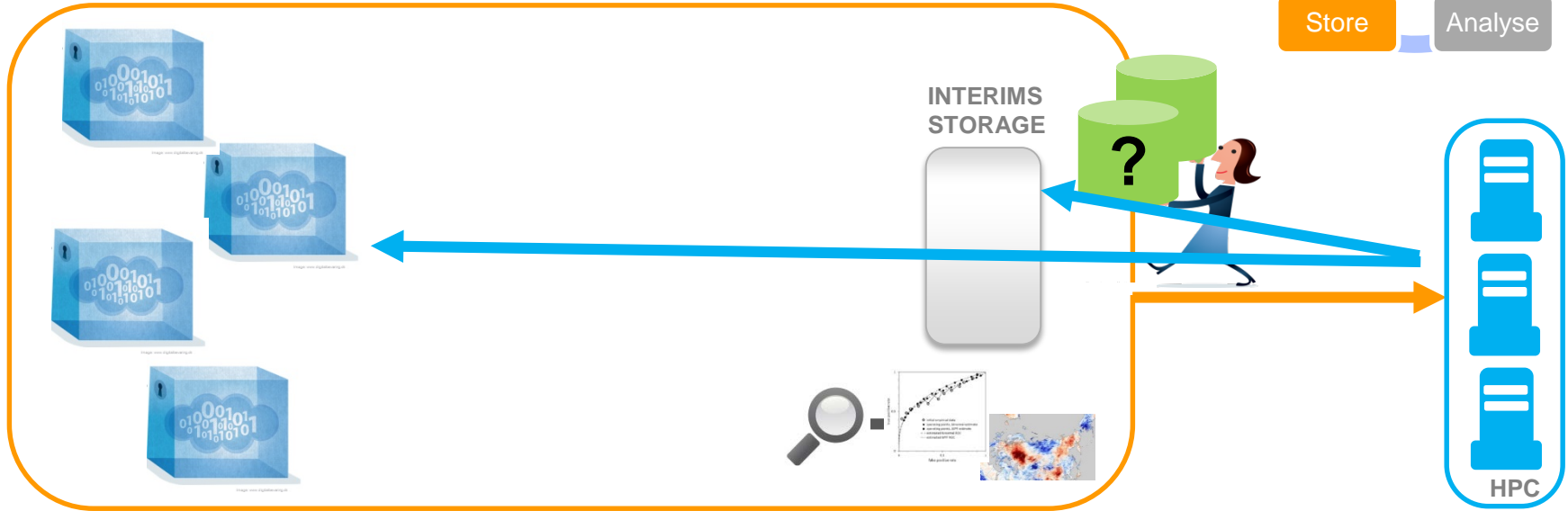
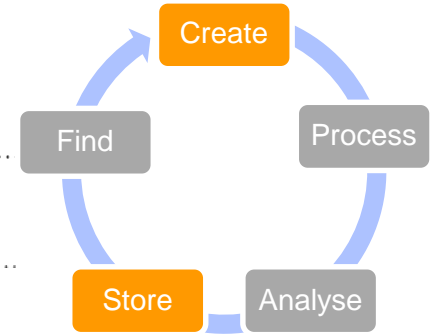
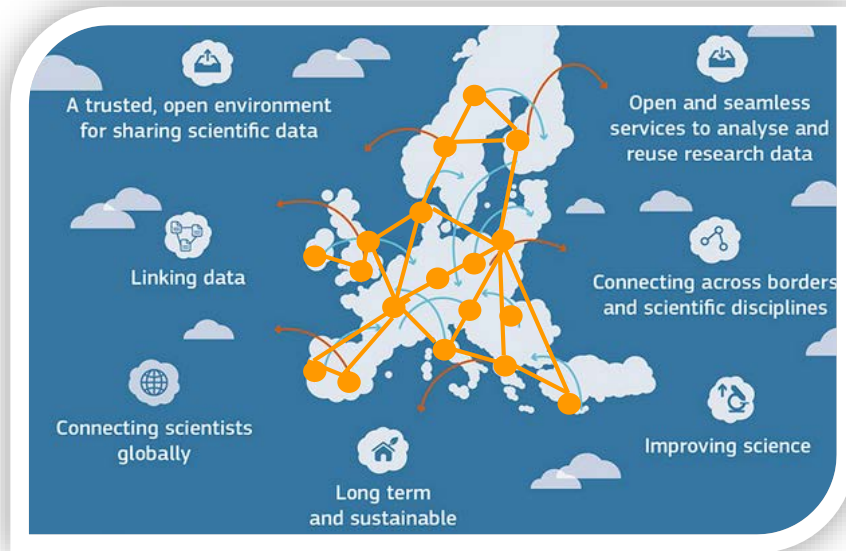
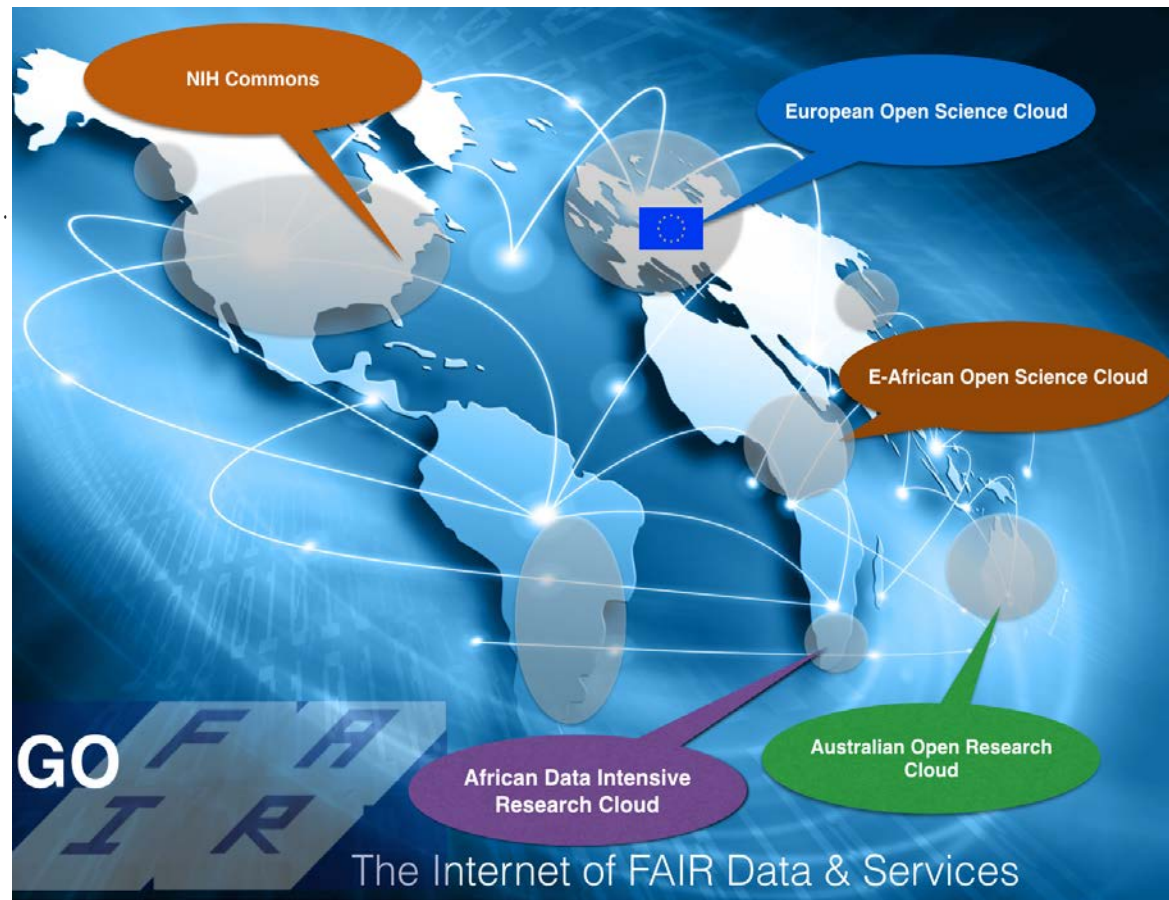


Image: www.digitalbevaring.dk

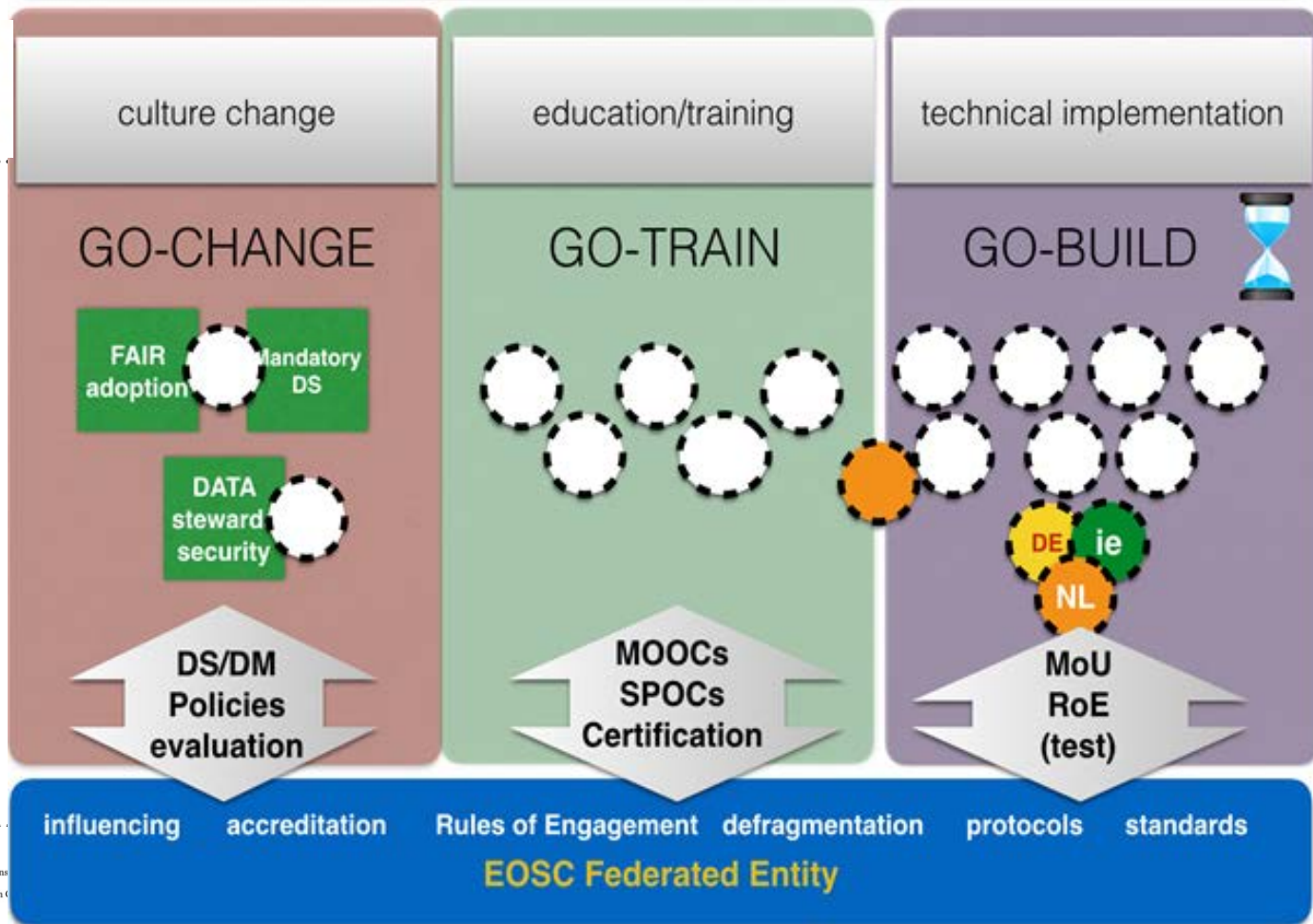
# Europa



# ... und die Welt







# Danke

---



<http://www.gerdi-project.de/>

Klaus Tochtermann  
Kiel / Hamburg  
Email: [k.tochtermann@zbw.eu](mailto:k.tochtermann@zbw.eu)

Acknowledgement  
Images provided by:  
[www.digitalbevaring.dk](http://www.digitalbevaring.dk)